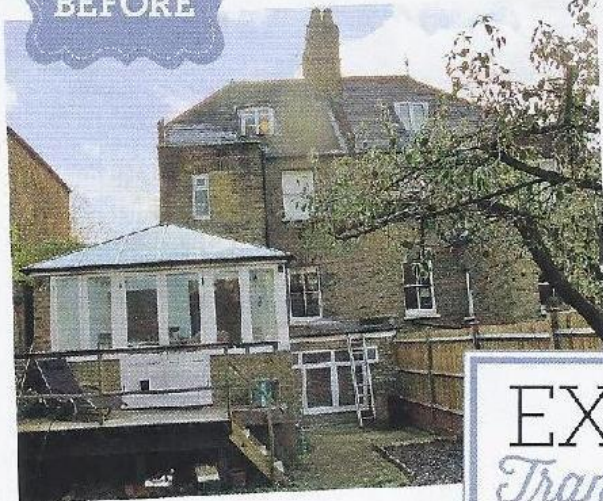


▶ The two-storey extension has created more space and transformed the back of the house

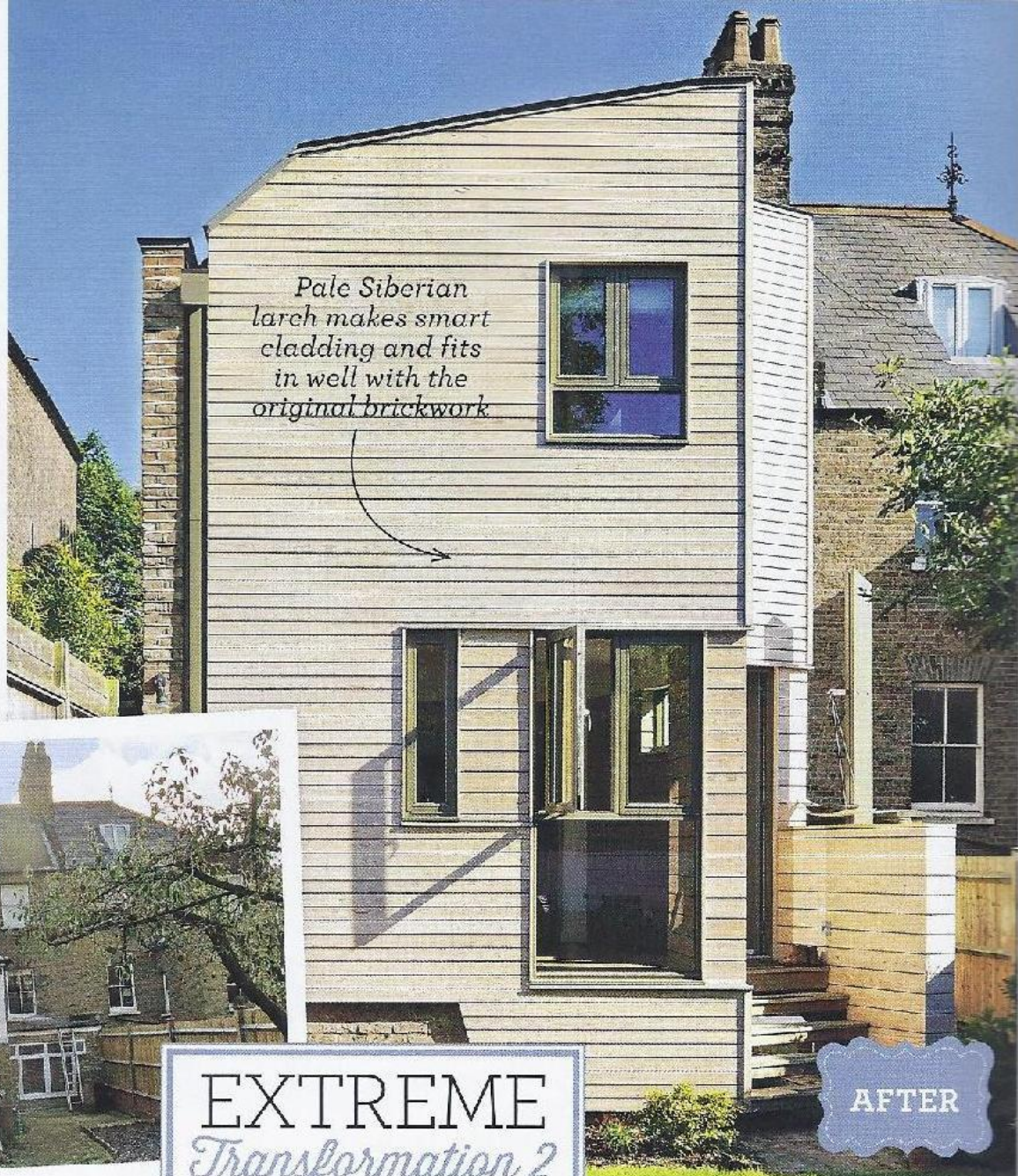
▼ At the rear of the Victorian cottage was a tired and dated conservatory, and a mismatched mix of brickwork and windows

BEFORE



EXTREME
Transformation 2

AFTER



Pale Siberian larch makes smart cladding and fits in well with the original brickwork

‘We added a striking two-storey extension’

Ben Perl and Amanda Kendrick have enlarged their home with an unusual extension made from wood

Set in leafy Putney Heath, south London, Ben Perl and Amanda Kendrick’s pretty three-bedroom Victorian house feels idyllic. However, when Ben bought it six years ago, the impression would have been quite different. ‘After viewing around 40 houses, I saw this and knew it was perfect,’ he says. At the back, there was a leaky Eighties conservatory and mismatched brickwork where windows had

been blocked up. It wasn’t ideal, but he could see its potential anyway and bought it. **THINKING BIG** After three years in the property, Ben decided the conservatory had to go. ‘It was too hot in summer and freezing in winter,’ he explains. He decided to replace it with a two-storey extension, housing a kitchen-diner with a bedroom suite above. The property is in a Conservation Area, which meant the front of the cottage had to remain untouched, so Ben took advice from





▲ Sections of timber cladding make a chic contrast to the plain white walls, while the engineered-oak floor adds warmth and texture

▼ Exposed structural timbers in the new bedroom create a tree-house effect, which is echoed in the wood floor and furniture



a planning consultant, who recommended architect Simon Gill (020 3713 9485; simongillarchitects.co.uk). Simon came up with an unusual two-storey structure, which involved reconfiguring the first-floor bathroom to create access into the new bedroom.

A local building firm was employed to do the work. Using lightweight timber, they could build the extension on the existing concrete plinth of the conservatory, which avoided the need for new foundations and reduced costs. **TRICKY DETAILS** The cladding had to be hung horizontally due to planning requirements, so the builders used a steamer to bend the Siberian larch and wrap it around the extension – the first time they'd done such a thing.

The extension features a splayed bay giving access to the garden, while the doors and windows have projecting reveals. The windows' grey frames complement the external cladding. Upstairs, the new bedroom has exposed structural pine ceiling timbers and an en suite.

Ben paid £705,000 for the property, the build cost £122,000 and the house is currently worth £1.3 million. Amanda, who had been living in Wales while work was underway, moved in a year later. 'We now have a unique extension that we love and which works well with the old house,' says Ben.



Ben Perl and Amanda Kendrick

Trials & triumphs...

■ What was the high point?

'Creating such a beautiful and functional space, which reminds me of a tree house.'

■ Any low points?

'I needlessly worried about how the extension would turn out.'

■ Who was the project saviour?

'The builders – they were excellent and their finishes were so meticulous.'